

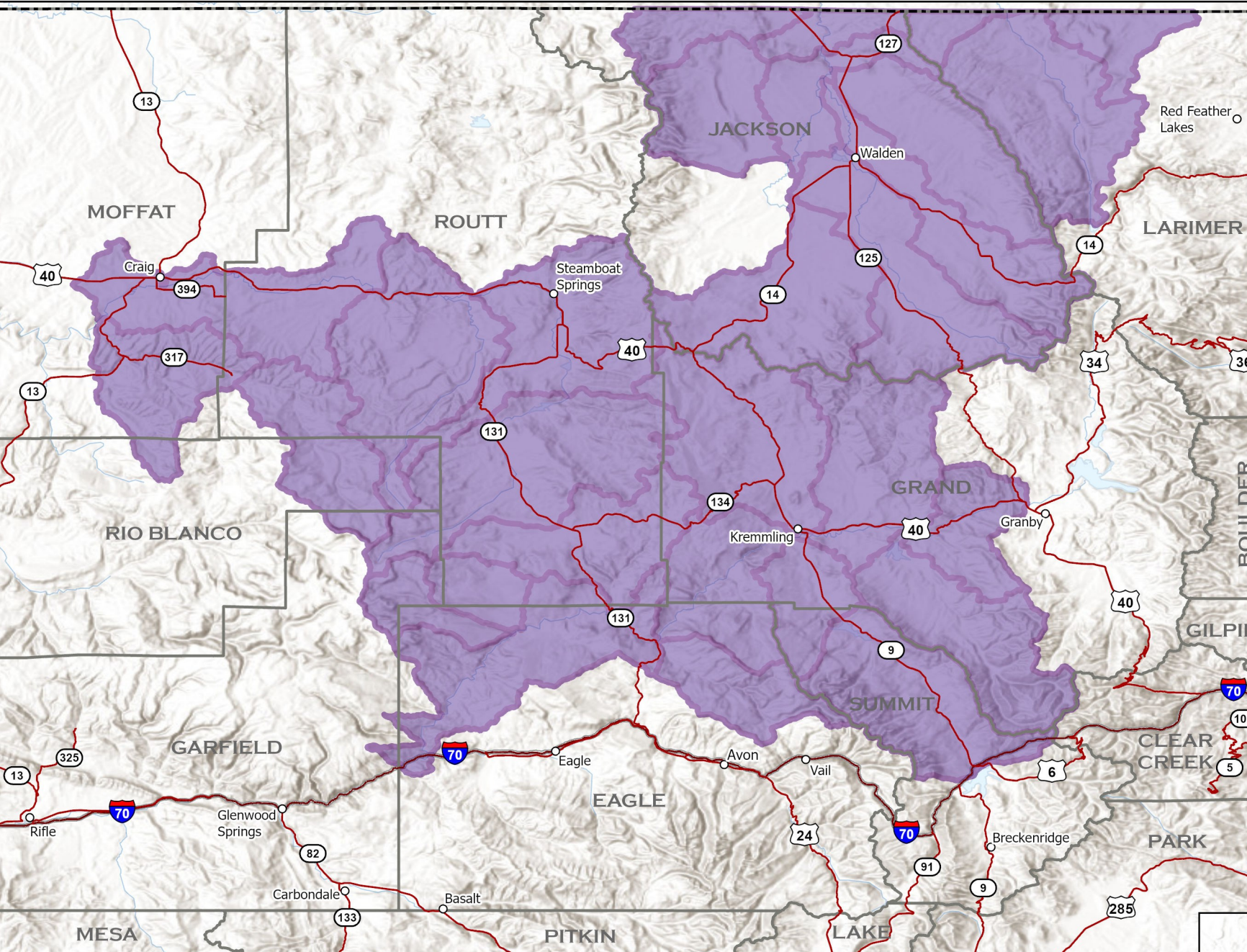


Current as of February 27, 2024
Published February 28, 2024

The minimum mapping unit is the local watershed.

This map depicts watersheds where collared wolves in Colorado have been from January 23, 2024-February 27, 2024. In order for a watershed to indicate wolf activity, at least one GPS position was recorded within the boundaries of the watershed.

Simply because a watershed indicates wolf activity, it does not mean that a wolf or wolves are present throughout the entire watershed.

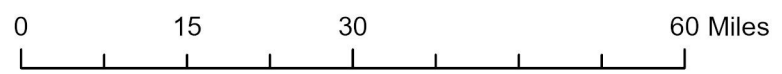


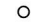




 Wolf activity in watershed

A watershed is a geographic unit that drains water into a specific waterbody. These are also known as Hydrologic Unit Codes (HUC). Information is shared at the HUC 10 level. More can be learned about HUC at <https://water.usgs.gov/GIS/huc.html>.

Collared Gray Wolf Activity January 23, 2024 - February 27, 2024

1:1,100,000



-  Colorado Towns
-  Interstate
-  Highways
-  County Boundary
-  Colorado Boundary

